

1-BEDROOM

Type A1

38 sq m | 409 sq ft
 INCLUSIVE OF 3 SQM AC LEDGE

Tower 16
 UNIT
 #03-01 TO #29-01

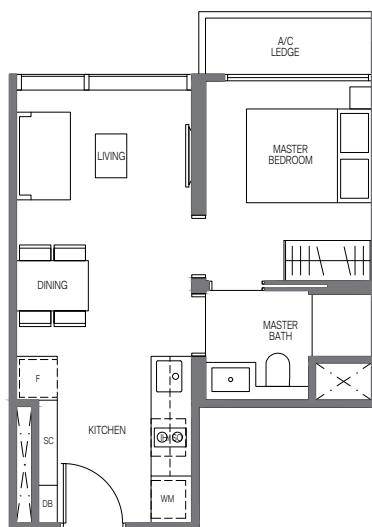
Tower 18
 UNIT
 #03-11 TO #29-11
 #03-13 TO #29-13

Type A1-R

38 sq m | 409 sq ft
 INCLUSIVE OF 3 SQM AC LEDGE

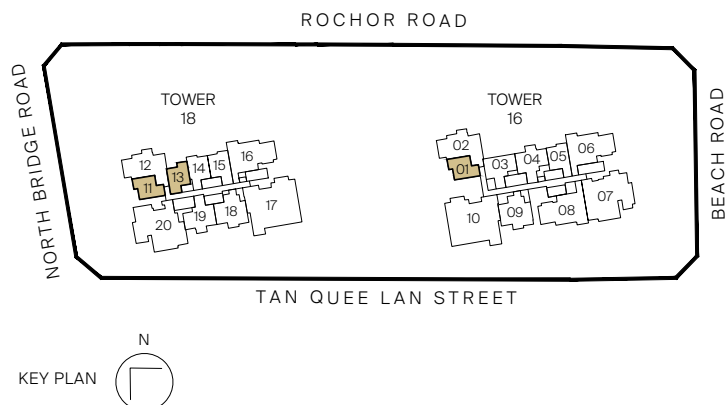
Tower 16
 UNIT
 #30-01

Tower 18
 UNIT
 #30-11
 #30-13



Legend (where applicable)

- | | |
|-------------------------------|--------------------------------|
| F - Fridge | WCH - Wine Chiller |
| IH - Induction Hob | W - Washer |
| GH - Gas Hob | D - Dryer |
| WM - Washer cum Dryer | DB - Distribution Board |
| SO - Combi Steam Oven | SC - Shoe Cabinet |
| CO - Convectional Oven | |



1-BEDROOM

Type A2-G

44 sq m | 474 sq ft

INCLUSIVE OF 5 SQM PES & 3 SQM AC LEDGE

Tower 18

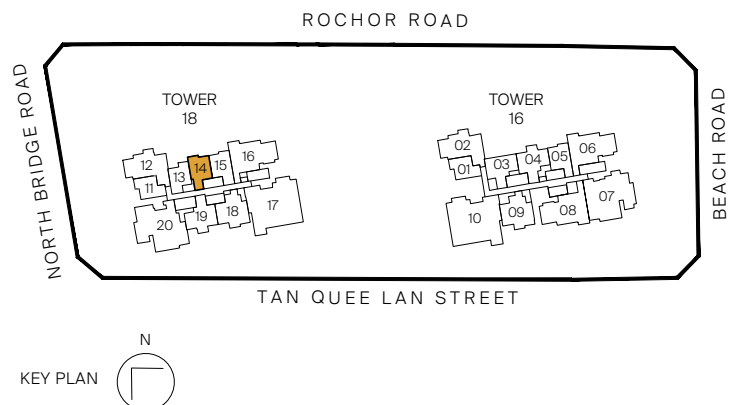
UNIT

#03-14



Legend (where applicable)

- | | |
|-------------------------------|--------------------------------|
| F - Fridge | WCH - Wine Chiller |
| IH - Induction Hob | W - Washer |
| GH - Gas Hob | D - Dryer |
| WM - Washer cum Dryer | DB - Distribution Board |
| SO - Combi Steam Oven | SC - Shoe Cabinet |
| CO - Convectional Oven | |



All plans are subjected to amendments as may be approved by the relevant authorities. Floor areas are approximate measurements and are subjected to final survey.

* Balconies/PES are not to be enclosed except with a balcony screen which has been approved and complies with the Competent Authority's guidelines.

For an illustration of the approved balcony screen, please refer to this brochure

1-BEDROOM

Type A2

44 sq m | 474 sq ft

INCLUSIVE OF 5 SQM BALCONY & 3 SQM AC LEDGE

Tower 18

UNIT

#04-14 to #29-14

Type A2-R

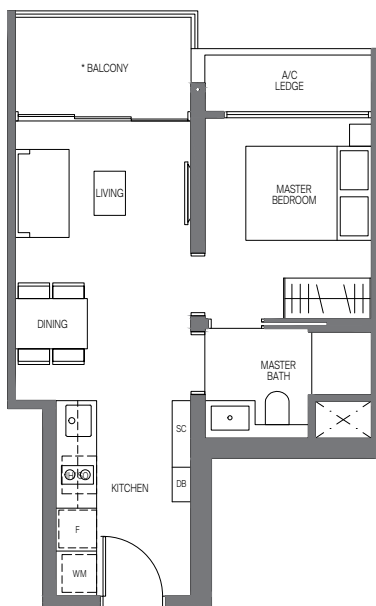
44 sq m | 474 sq ft

INCLUSIVE OF 5 SQM BALCONY & 3 SQM AC LEDGE

Tower 18

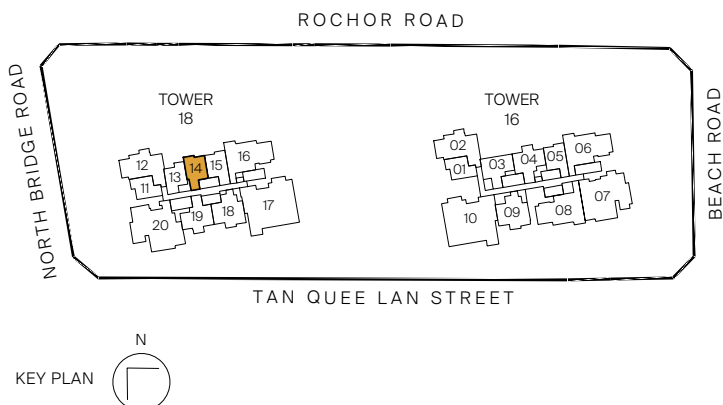
UNIT

#30-14



Legend (where applicable)

- | | |
|-------------------------------|--------------------------------|
| F - Fridge | WCH - Wine Chiller |
| IH - Induction Hob | W - Washer |
| GH - Gas Hob | D - Dryer |
| WM - Washer cum Dryer | DB - Distribution Board |
| SO - Combi Steam Oven | SC - Shoe Cabinet |
| CO - Convectional Oven | |



All plans are subjected to amendments as may be approved by the relevant authorities. Floor areas are approximate measurements and are subjected to final survey.

* Balconies/PES are not to be enclosed except with a balcony screen which has been approved and complies with the Competent Authority's guidelines. For an illustration of the approved balcony screen, please refer to this brochure

1-BEDROOM

Type A3-G

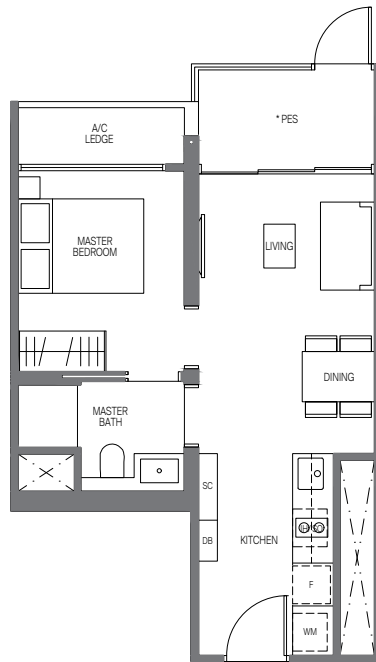
44 sq m | 474 sq ft

INCLUSIVE OF 5 SQM PES & 3 SQM AC LEDGE

Tower 18

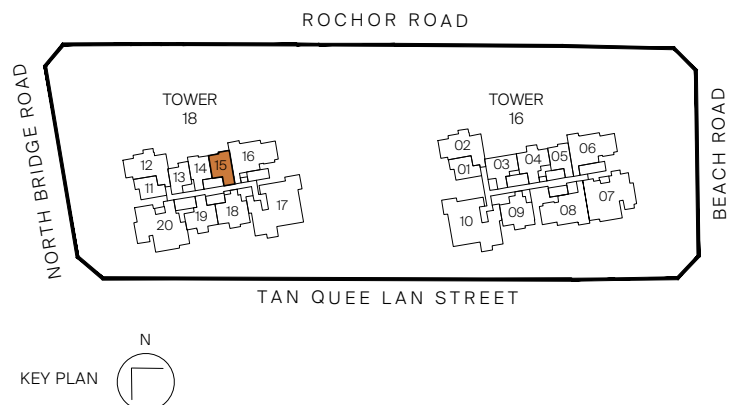
UNIT

#03-15



Legend (where applicable)

- | | |
|-------------------------------|--------------------------------|
| F - Fridge | WCH - Wine Chiller |
| IH - Induction Hob | W - Washer |
| GH - Gas Hob | D - Dryer |
| WM - Washer cum Dryer | DB - Distribution Board |
| SO - Combi Steam Oven | SC - Shoe Cabinet |
| CO - Convectional Oven | |



All plans are subjected to amendments as may be approved by the relevant authorities. Floor areas are approximate measurements and are subjected to final survey.

* Balconies/PES are not to be enclosed except with a balcony screen which has been approved and complies with the Competent Authority's guidelines.

For an illustration of the approved balcony screen, please refer to this brochure

1-BEDROOM

Type A3

44 sq m | 474 sq ft

INCLUSIVE OF 5 SQM BALCONY & 3 SQM AC LEDGE

Tower 18

UNIT

#04-15 to #29-15

Type A3-R

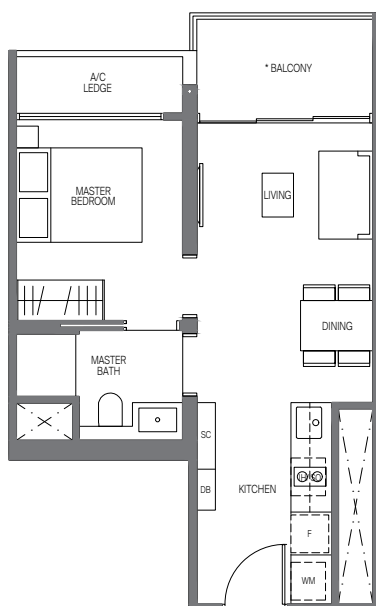
44 sq m | 474 sq ft

INCLUSIVE OF 5 SQM BALCONY & 3 SQM AC LEDGE

Tower 18

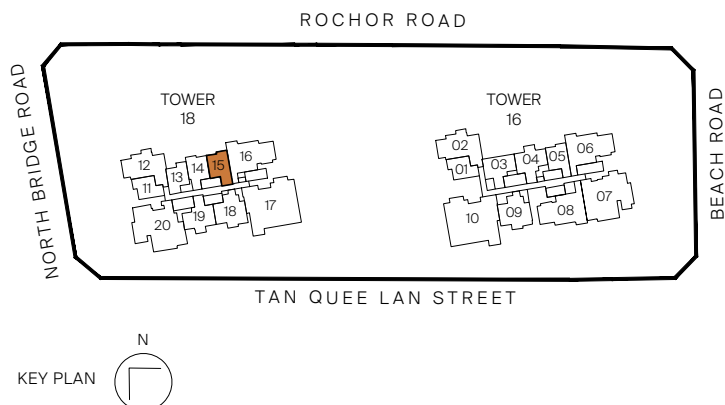
UNIT

#30-15



Legend (where applicable)

- | | |
|-------------------------------|--------------------------------|
| F - Fridge | WCH - Wine Chiller |
| IH - Induction Hob | W - Washer |
| GH - Gas Hob | D - Dryer |
| WM - Washer cum Dryer | DB - Distribution Board |
| SO - Combi Steam Oven | SC - Shoe Cabinet |
| CO - Convectional Oven | |



All plans are subjected to amendments as may be approved by the relevant authorities. Floor areas are approximate measurements and are subjected to final survey.

* Balconies/PES are not to be enclosed except with a balcony screen which has been approved and complies with the Competent Authority's guidelines. For an illustration of the approved balcony screen, please refer to this brochure

1-BEDROOM

Type A4-G

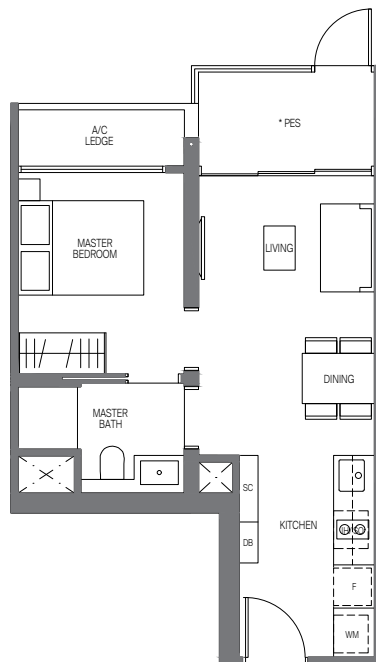
44 sq m | 474 sq ft

INCLUSIVE OF 5 SQM PES & 3 SQM AC LEDGE

Tower 16

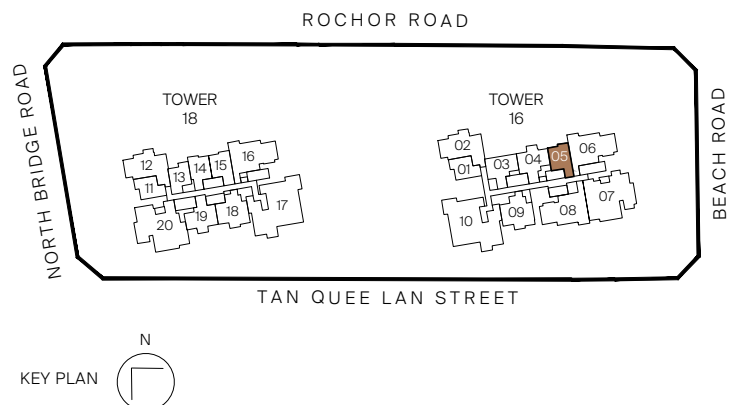
UNIT

#03-05



Legend (where applicable)

- | | |
|-------------------------------|--------------------------------|
| F - Fridge | WCH - Wine Chiller |
| IH - Induction Hob | W - Washer |
| GH - Gas Hob | D - Dryer |
| WM - Washer cum Dryer | DB - Distribution Board |
| SO - Combi Steam Oven | SC - Shoe Cabinet |
| CO - Convectional Oven | |



All plans are subjected to amendments as may be approved by the relevant authorities. Floor areas are approximate measurements and are subjected to final survey.

* Balconies/PES are not to be enclosed except with a balcony screen which has been approved and complies with the Competent Authority's guidelines.

For an illustration of the approved balcony screen, please refer to this brochure

1-BEDROOM

Type A4

44 sq m | 474 sq ft

INCLUSIVE OF 5 SQM BALCONY & 3 SQM AC LEDGE

Tower 16

UNIT

#04-05 to #29-05

Type A4-R

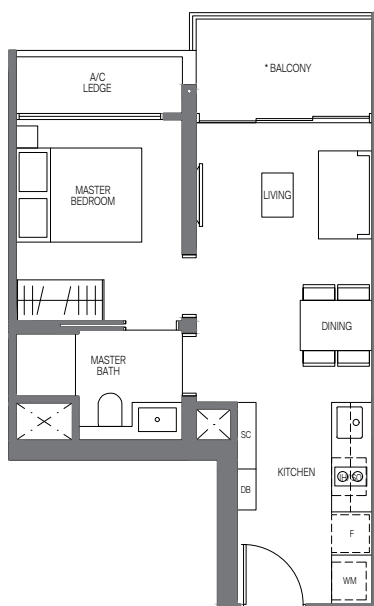
44 sq m | 474 sq ft

INCLUSIVE OF 5 SQM BALCONY & 3 SQM AC LEDGE

Tower 16

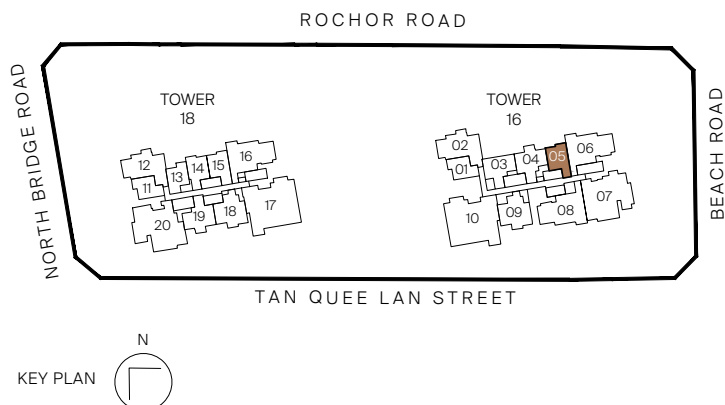
UNIT

#30-05



Legend (where applicable)

- | | |
|-------------------------------|--------------------------------|
| F - Fridge | WCH - Wine Chiller |
| IH - Induction Hob | W - Washer |
| GH - Gas Hob | D - Dryer |
| WM - Washer cum Dryer | DB - Distribution Board |
| SO - Combi Steam Oven | SC - Shoe Cabinet |
| CO - Convectional Oven | |



All plans are subjected to amendments as may be approved by the relevant authorities. Floor areas are approximate measurements and are subjected to final survey.

* Balconies/PES are not to be enclosed except with a balcony screen which has been approved and complies with the Competent Authority's guidelines. For an illustration of the approved balcony screen, please refer to this brochure

2-BEDROOM

Type B1

55 sq m | 592 sq ft

INCLUSIVE OF 3 SQM AC LEDGE

Tower 16

UNIT

#03-03 to #29-03

Type B1-R

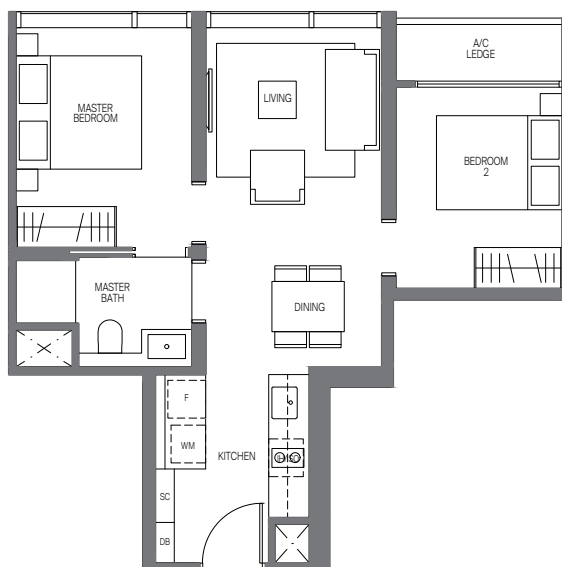
55 sq m | 592 sq ft

INCLUSIVE OF 3 SQM AC LEDGE

Tower 16

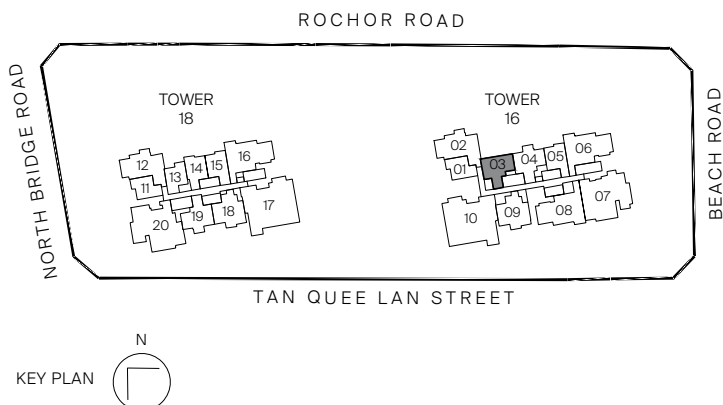
UNIT

#30-03



Legend (where applicable)

- | | |
|-------------------------------|--------------------------------|
| F - Fridge | WCH - Wine Chiller |
| IH - Induction Hob | W - Washer |
| GH - Gas Hob | D - Dryer |
| WM - Washer cum Dryer | DB - Distribution Board |
| SO - Combi Steam Oven | SC - Shoe Cabinet |
| CO - Convectional Oven | |



2-BEDROOM

Type B2-G

59 sq m | 635 sq ft

INCLUSIVE OF 5 SQM PES & 3 SQM AC LEDGE

Tower 16

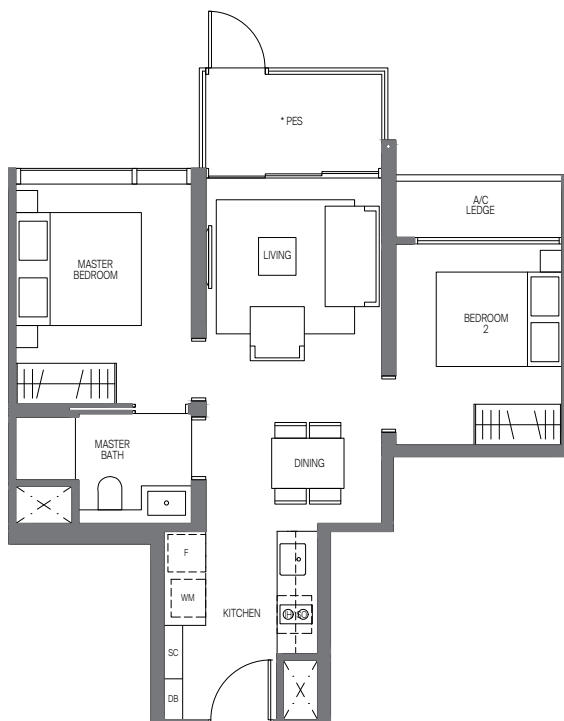
UNIT

#03-04

Tower 18

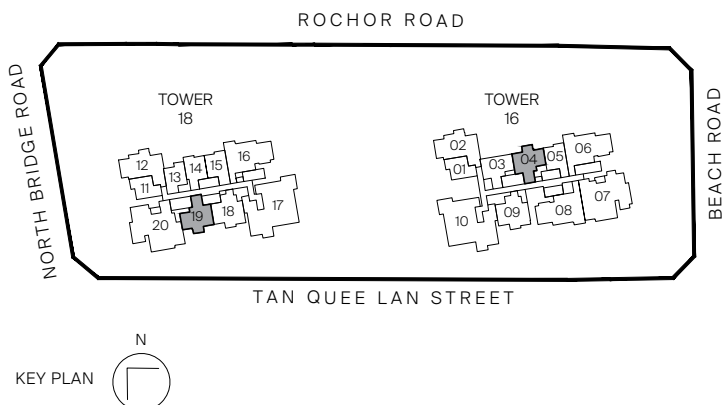
UNIT

#03-19



Legend (where applicable)

- | | |
|-------------------------------|--------------------------------|
| F - Fridge | WCH - Wine Chiller |
| IH - Induction Hob | W - Washer |
| GH - Gas Hob | D - Dryer |
| WM - Washer cum Dryer | DB - Distribution Board |
| SO - Combi Steam Oven | SC - Shoe Cabinet |
| CO - Convectional Oven | |



All plans are subjected to amendments as may be approved by the relevant authorities. Floor areas are approximate measurements and are subjected to final survey.

* Balconies/PES are not to be enclosed except with a balcony screen which has been approved and complies with the Competent Authority's guidelines. For an illustration of the approved balcony screen, please refer to this brochure

2-BEDROOM

Type B2

59 sq m | 635 sq ft

INCLUSIVE OF 5 SQM BALCONY & 3 SQM AC LEDGE

Tower 16

UNIT

#04-04 to #29-04

Tower 18

UNIT

#04-19 to #29-19

Type B2-R

59 sq m | 635 sq ft

INCLUSIVE OF 5 SQM BALCONY & 3 SQM AC LEDGE

Tower 16

UNIT

#30-04

Tower 18

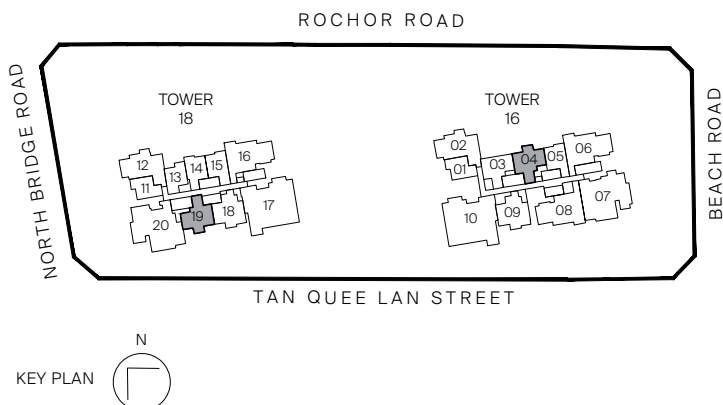
UNIT

#30-19



Legend (where applicable)

- | | |
|-------------------------------|--------------------------------|
| F - Fridge | WCH - Wine Chiller |
| IH - Induction Hob | W - Washer |
| GH - Gas Hob | D - Dryer |
| WM - Washer cum Dryer | DB - Distribution Board |
| SO - Combi Steam Oven | SC - Shoe Cabinet |
| CO - Convectional Oven | |



All plans are subjected to amendments as may be approved by the relevant authorities. Floor areas are approximate measurements and are subjected to final survey.

* Balconies/PES are not to be enclosed except with a balcony screen which has been approved and complies with the Competent Authority's guidelines. For an illustration of the approved balcony screen, please refer to this brochure

2-BEDROOM

Type B3-G

67 sq m | 721 sq ft

INCLUSIVE OF 5 SQM PES & 3 SQM AC LEDGE

Tower 16

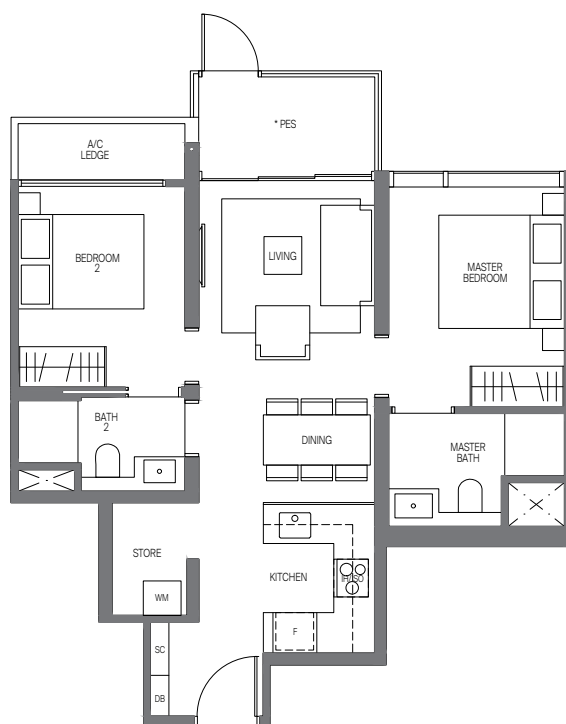
UNIT

#03-09

Tower 18

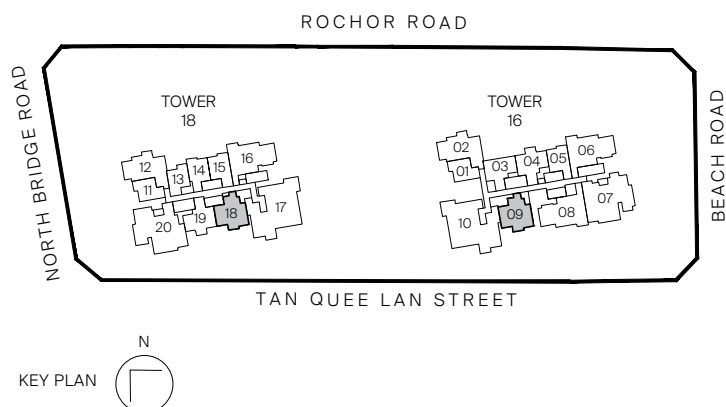
UNIT

#03-18



Legend (where applicable)

- | | |
|-------------------------------|--------------------------------|
| F - Fridge | WCH - Wine Chiller |
| IH - Induction Hob | W - Washer |
| GH - Gas Hob | D - Dryer |
| WM - Washer cum Dryer | DB - Distribution Board |
| SO - Combi Steam Oven | SC - Shoe Cabinet |
| CO - Convectional Oven | |



All plans are subjected to amendments as may be approved by the relevant authorities. Floor areas are approximate measurements and are subjected to final survey.

* Balconies/PES are not to be enclosed except with a balcony screen which has been approved and complies with the Competent Authority's guidelines.

For an illustration of the approved balcony screen, please refer to this brochure

2-BEDROOM

Type B3

67 sq m | 721 sq ft

INCLUSIVE OF 5 SQM BALCONY & 3 SQM AC LEDGE

Tower 16

UNIT

#04-09 to #29-09

Tower 18

UNIT

#04-18 to #29-18

Type B3-R

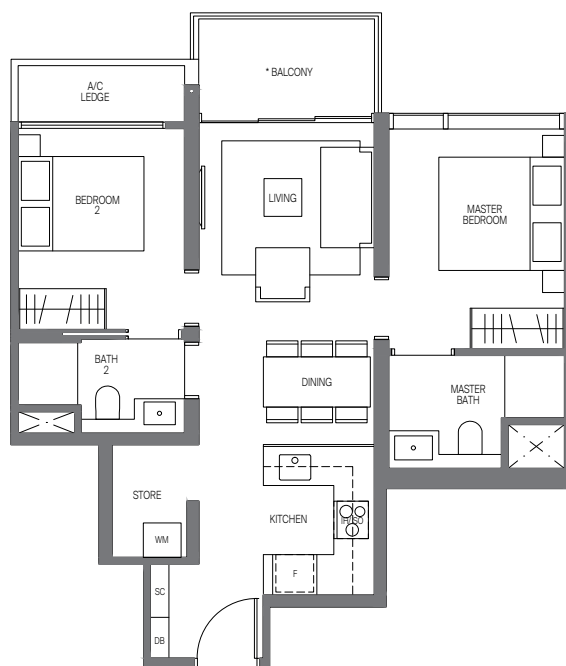
67 sq m | 721 sq ft

INCLUSIVE OF 5 SQM BALCONY & 3 SQM AC LEDGE

Tower 16

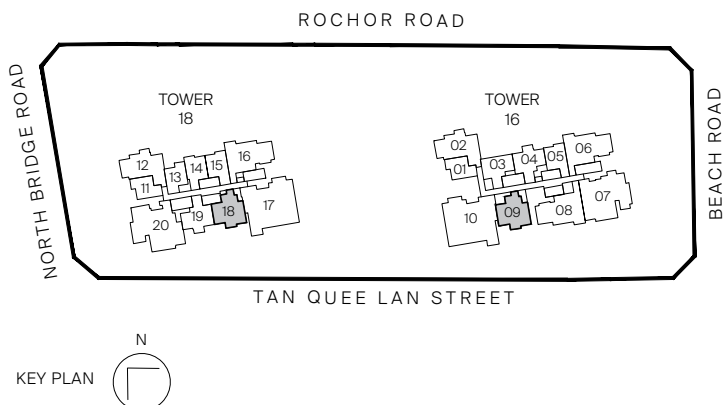
UNIT

#30-09



Legend (where applicable)

- | | |
|-------------------------------|--------------------------------|
| F - Fridge | WCH - Wine Chiller |
| IH - Induction Hob | W - Washer |
| GH - Gas Hob | D - Dryer |
| WM - Washer cum Dryer | DB - Distribution Board |
| SO - Combi Steam Oven | SC - Shoe Cabinet |
| CO - Convectional Oven | |



All plans are subjected to amendments as may be approved by the relevant authorities. Floor areas are approximate measurements and are subjected to final survey.

* Balconies/PES are not to be enclosed except with a balcony screen which has been approved and complies with the Competent Authority's guidelines.

For an illustration of the approved balcony screen, please refer to this brochure

3-BEDROOM

Type C1

84 sq m | 904 sq ft
 INCLUSIVE OF 7 SQM AC LEDGE

Tower 16
 UNIT
 #03-02 to #29-02

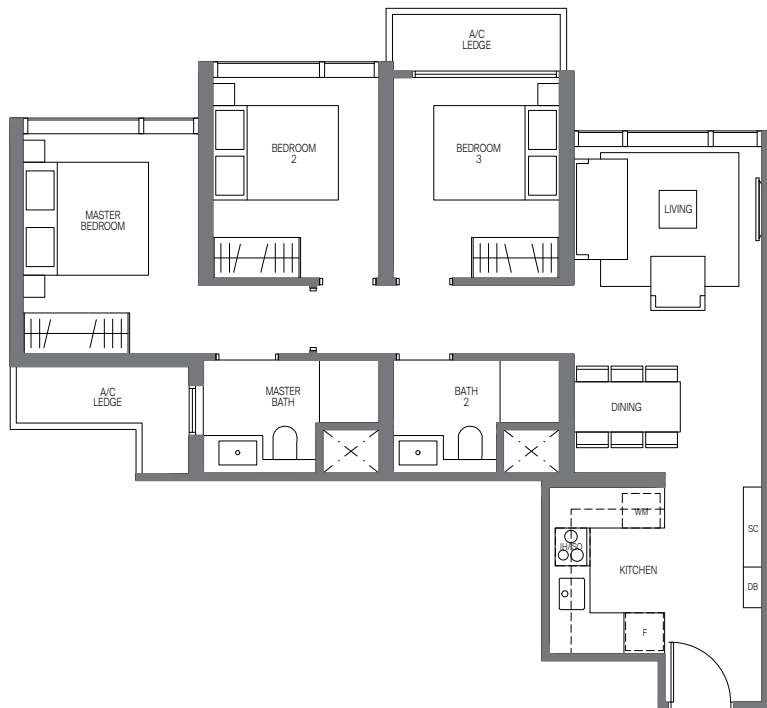
Tower 18
 UNIT
 #03-12 to #29-12

Type C1-R

84 sq m | 904 sq ft
 INCLUSIVE OF 7 SQM AC LEDGE

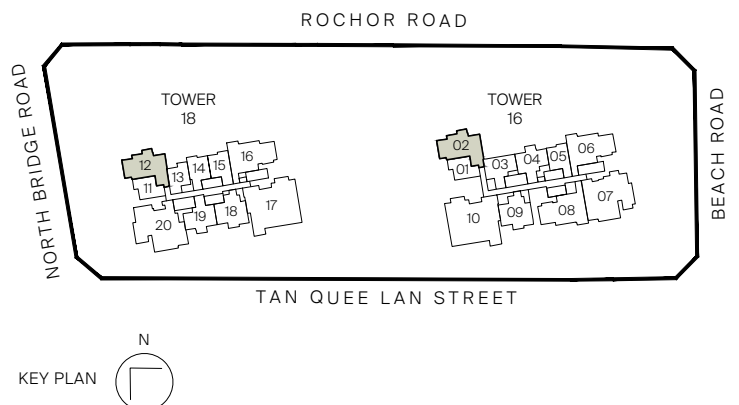
Tower 16
 UNIT
 #30-02

Tower 18
 UNIT
 #30-12



Legend (where applicable)

- | | |
|-------------------------------|--------------------------------|
| F - Fridge | WCH - Wine Chiller |
| IH - Induction Hob | W - Washer |
| GH - Gas Hob | D - Dryer |
| WM - Washer cum Dryer | DB - Distribution Board |
| SO - Combi Steam Oven | SC - Shoe Cabinet |
| CO - Convectional Oven | |



3-BEDROOM

Type C2-G

99 sq m | 1066 sq ft

INCLUSIVE OF 6 SQM PES & 5 SQM AC LEDGE

Tower 16

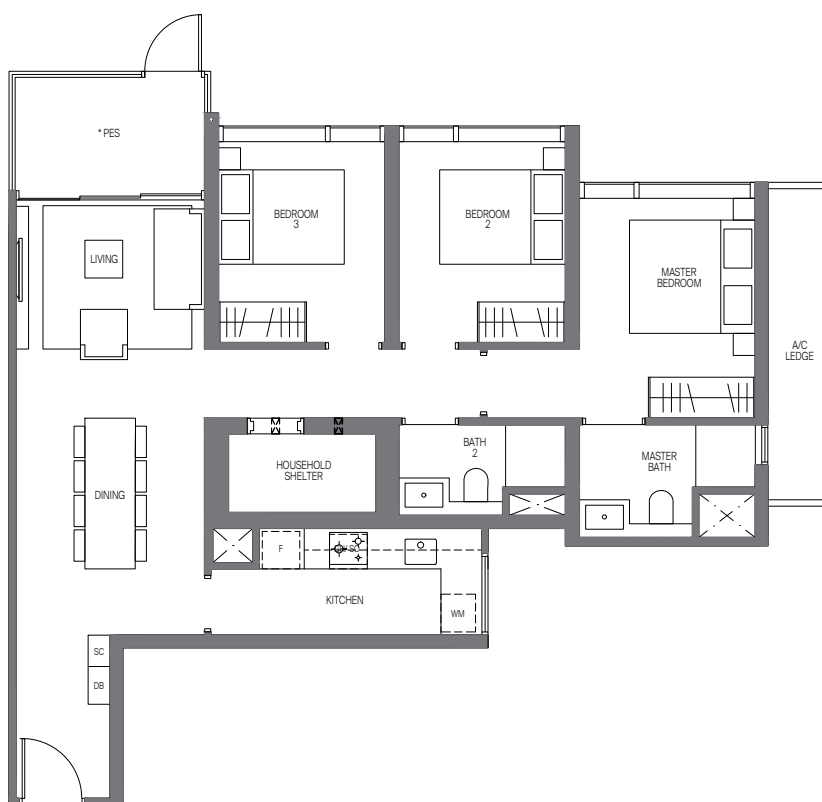
UNIT

#03-06

Tower 18

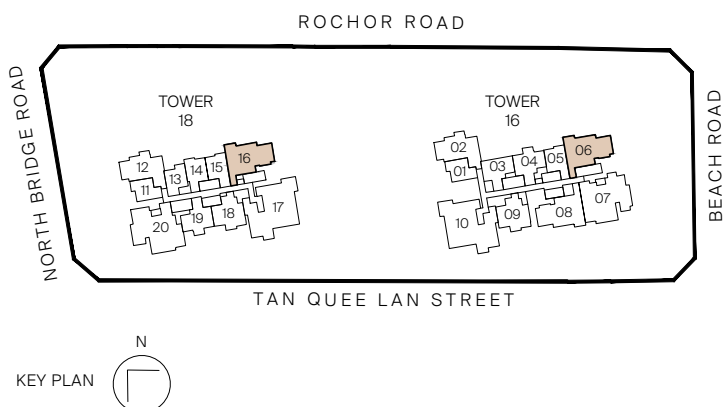
UNIT

#03-16



Legend (where applicable)

- | | |
|-------------------------------|--------------------------------|
| F - Fridge | WCH - Wine Chiller |
| IH - Induction Hob | W - Washer |
| GH - Gas Hob | D - Dryer |
| WM - Washer cum Dryer | DB - Distribution Board |
| SO - Combi Steam Oven | SC - Shoe Cabinet |
| CO - Convectional Oven | |



All plans are subjected to amendments as may be approved by the relevant authorities. Floor areas are approximate measurements and are subjected to final survey.

* Balconies/PES are not to be enclosed except with a balcony screen which has been approved and complies with the Competent Authority's guidelines.

For an illustration of the approved balcony screen, please refer to this brochure

3-BEDROOM

Type C2

99 sq m | 1066 sq ft

INCLUSIVE OF 6 SQM BALCONY & 5 SQM AC LEDGE

Tower 16

UNIT

#04-06 to #29-06

Tower 18

UNIT

#04-16 to #29-16

Type C2-R

99 sq m | 1066 sq ft

INCLUSIVE OF 6 SQM BALCONY & 5 SQM AC LEDGE

Tower 16

UNIT

#30-06

Tower 18

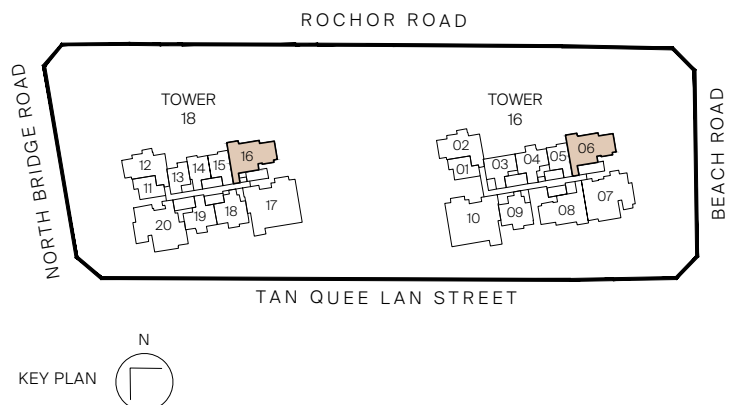
UNIT

#30-16



Legend (where applicable)

- | | |
|-------------------------------|--------------------------------|
| F - Fridge | WCH - Wine Chiller |
| IH - Induction Hob | W - Washer |
| GH - Gas Hob | D - Dryer |
| WM - Washer cum Dryer | DB - Distribution Board |
| SO - Combi Steam Oven | SC - Shoe Cabinet |
| CO - Convectional Oven | |



All plans are subjected to amendments as may be approved by the relevant authorities. Floor areas are approximate measurements and are subjected to final survey.

* Balconies/PES are not to be enclosed except with a balcony screen which has been approved and complies with the Competent Authority's guidelines.

For an illustration of the approved balcony screen, please refer to this brochure

3-BEDROOM

Type C3-G

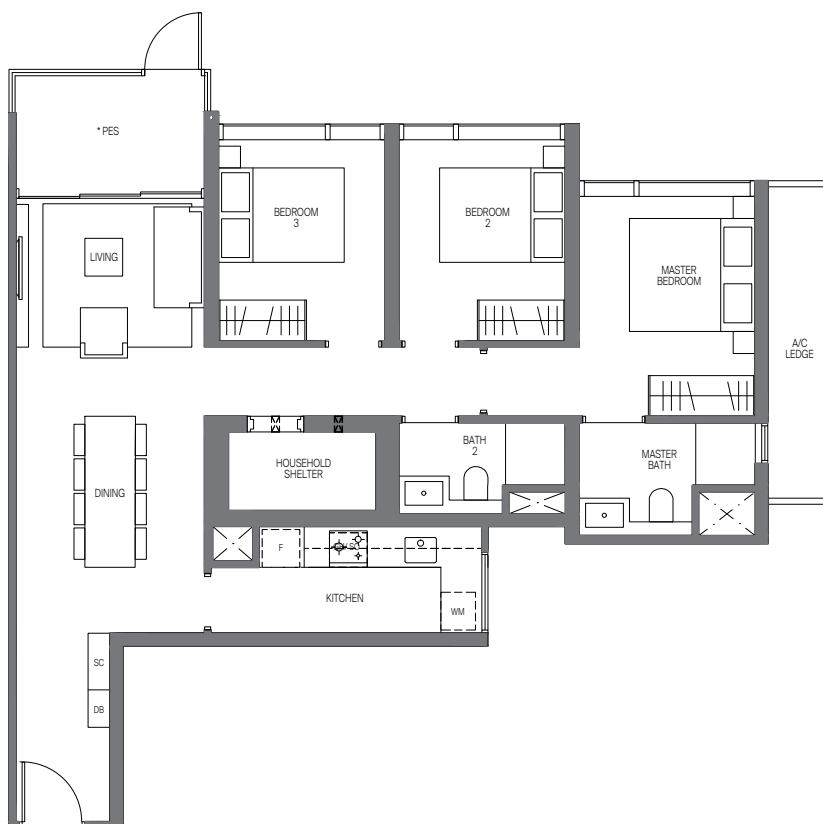
99 sq m | 1066 sq ft

INCLUSIVE OF 6 SQM PES & 5 SQM AC LEDGE

Tower 16

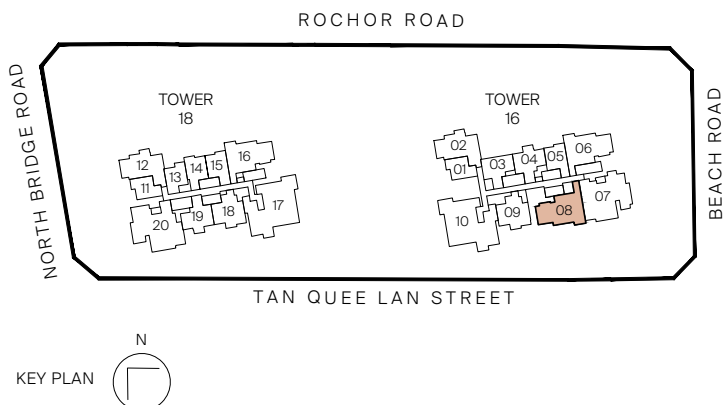
UNIT

#03-08



Legend (where applicable)

- | | |
|-------------------------------|--------------------------------|
| F - Fridge | WCH - Wine Chiller |
| IH - Induction Hob | W - Washer |
| GH - Gas Hob | D - Dryer |
| WM - Washer cum Dryer | DB - Distribution Board |
| SO - Combi Steam Oven | SC - Shoe Cabinet |
| CO - Convectional Oven | |



All plans are subjected to amendments as may be approved by the relevant authorities. Floor areas are approximate measurements and are subjected to final survey.

* Balconies/PES are not to be enclosed except with a balcony screen which has been approved and complies with the Competent Authority's guidelines. For an illustration of the approved balcony screen, please refer to this brochure

3-BEDROOM

Type C3

99 sq m | 1066 sq ft

INCLUSIVE OF 6 SQM BALCONY & 5 SQM AC LEDGE

Tower 16

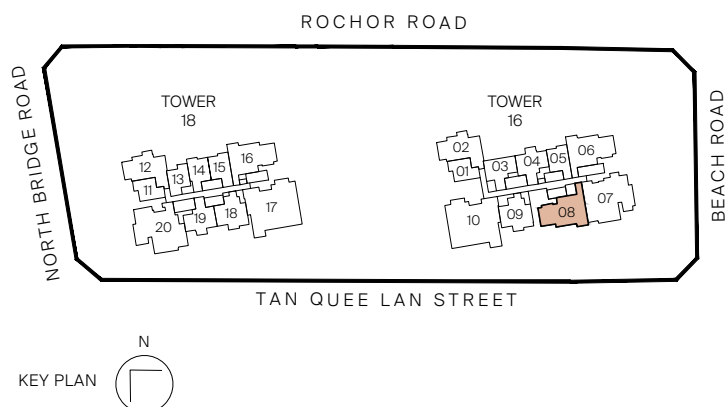
UNIT

#04-08 to #29-08



Legend (where applicable)

- | | |
|-------------------------------|--------------------------------|
| F - Fridge | WCH - Wine Chiller |
| IH - Induction Hob | W - Washer |
| GH - Gas Hob | D - Dryer |
| WM - Washer cum Dryer | DB - Distribution Board |
| SO - Combi Steam Oven | SC - Shoe Cabinet |
| CO - Convectional Oven | |



All plans are subjected to amendments as may be approved by the relevant authorities. Floor areas are approximate measurements and are subjected to final survey.

* Balconies/PES are not to be enclosed except with a balcony screen which has been approved and complies with the Competent Authority's guidelines. For an illustration of the approved balcony screen, please refer to this brochure

4-BEDROOM

Type D1-G (PL)

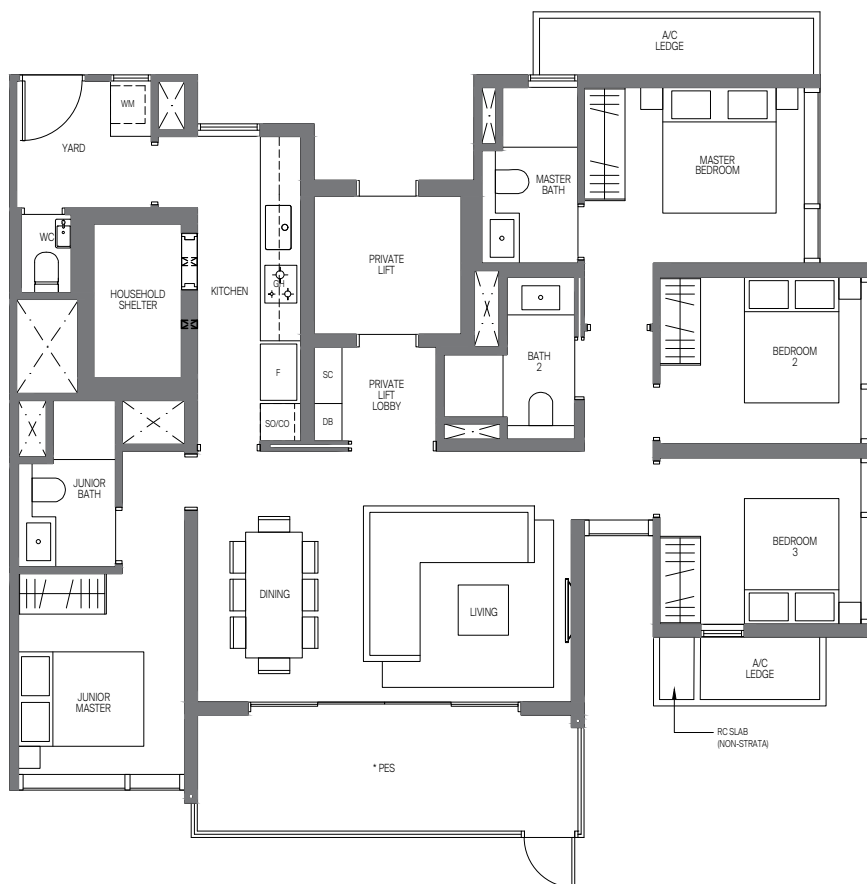
133 sq m | 1432 sq ft

INCLUSIVE OF 13 SQM PES & 7 SQM AC LEDGE

Tower 16

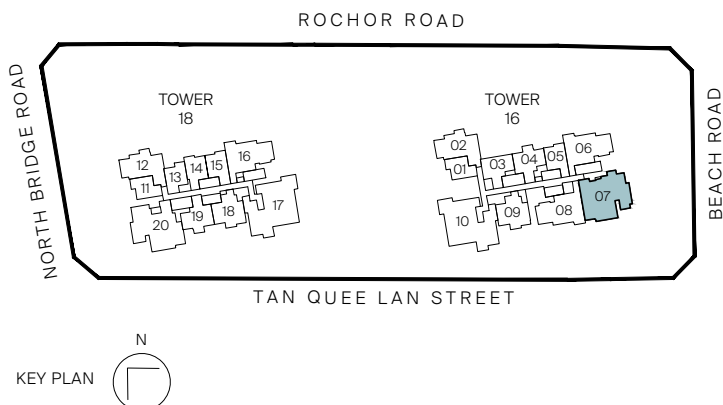
UNIT

#03-07



Legend (where applicable)

- | | |
|-------------------------------|--------------------------------|
| F - Fridge | WCH - Wine Chiller |
| IH - Induction Hob | W - Washer |
| GH - Gas Hob | D - Dryer |
| WM - Washer cum Dryer | DB - Distribution Board |
| SO - Steam Oven | SC - Shoe Cabinet |
| CO - Convectional Oven | |



All plans are subjected to amendments as may be approved by the relevant authorities. Floor areas are approximate measurements and are subjected to final survey.
 * Balconies/PES are not to be enclosed except with a balcony screen which has been approved and complies with the Competent Authority's guidelines.
 For an illustration of the approved balcony screen, please refer to this brochure

4-BEDROOM

Type D1 (PL)

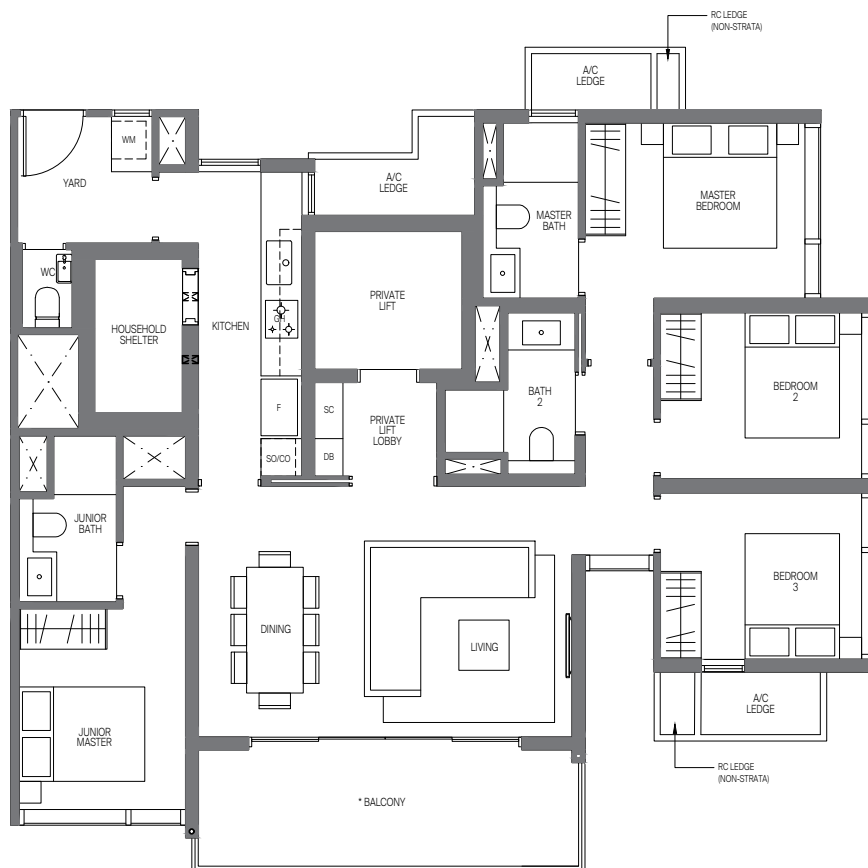
134 sq m | 1442 sq ft

INCLUSIVE OF 13 SQM BALCONY & 8 SQM AC LEDGE

Tower 16

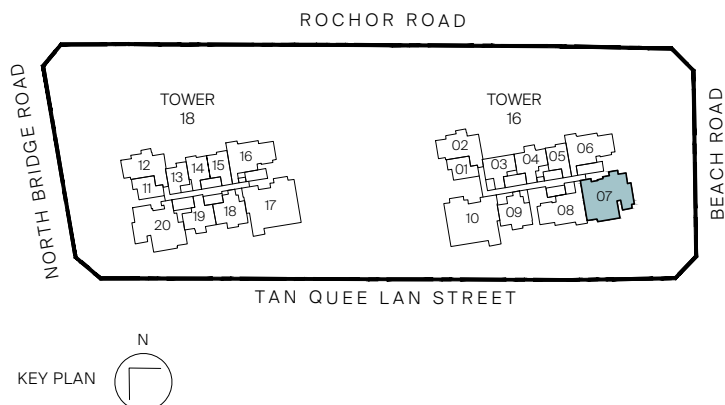
UNIT

#04-07 to #29-07



Legend (where applicable)

- | | |
|-------------------------------|--------------------------------|
| F - Fridge | WCH - Wine Chiller |
| IH - Induction Hob | W - Washer |
| GH - Gas Hob | D - Dryer |
| WM - Washer cum Dryer | DB - Distribution Board |
| SO - Steam Oven | SC - Shoe Cabinet |
| CO - Convectional Oven | |



All plans are subjected to amendments as may be approved by the relevant authorities. Floor areas are approximate measurements and are subjected to final survey.

* Balconies/PES are not to be enclosed except with a balcony screen which has been approved and complies with the Competent Authority's guidelines. For an illustration of the approved balcony screen, please refer to this brochure

4-BEDROOM

Type D2-G (PL)

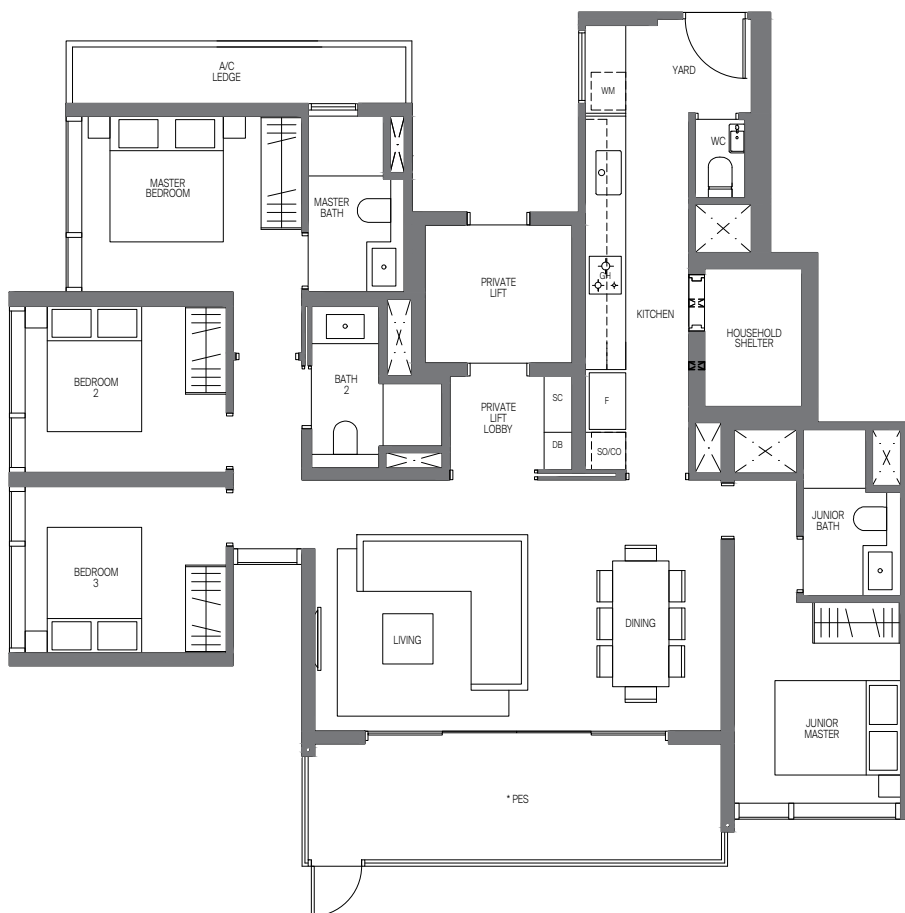
134 sq m | 1442 sq ft

INCLUSIVE OF 14 SQM PES & 6 SQM AC LEDGE

Tower 18

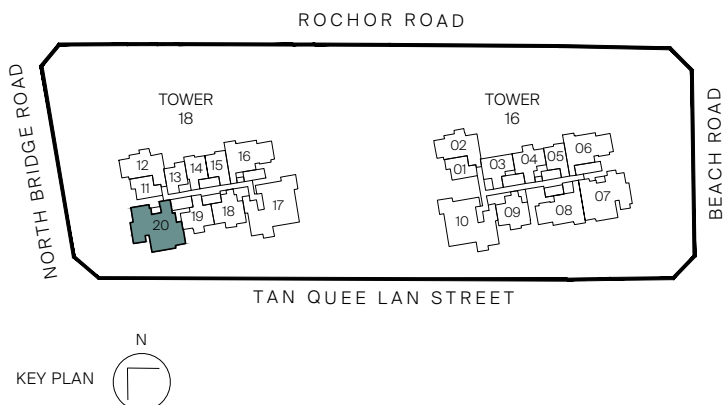
UNIT

#03-20



Legend (where applicable)

- | | |
|-------------------------------|--------------------------------|
| F - Fridge | WCH - Wine Chiller |
| IH - Induction Hob | W - Washer |
| GH - Gas Hob | D - Dryer |
| WM - Washer cum Dryer | DB - Distribution Board |
| SO - Steam Oven | SC - Shoe Cabinet |
| CO - Convectional Oven | |



All plans are subjected to amendments as may be approved by the relevant authorities. Floor areas are approximate measurements and are subjected to final survey.

* Balconies/PES are not to be enclosed except with a balcony screen which has been approved and complies with the Competent Authority's guidelines.

For an illustration of the approved balcony screen, please refer to this brochure

4-BEDROOM

Type D2 (PL)

136 sq m | 1464 sq ft

INCLUSIVE OF 14 SQM BALCONY & 8 SQM AC LEDGE

Tower 18

UNIT

#04-20 to #29-20

Type D2-R (PL)

136 sq m | 1464 sq ft

INCLUSIVE OF 14 SQM BALCONY & 8 SQM AC LEDGE

Tower 18

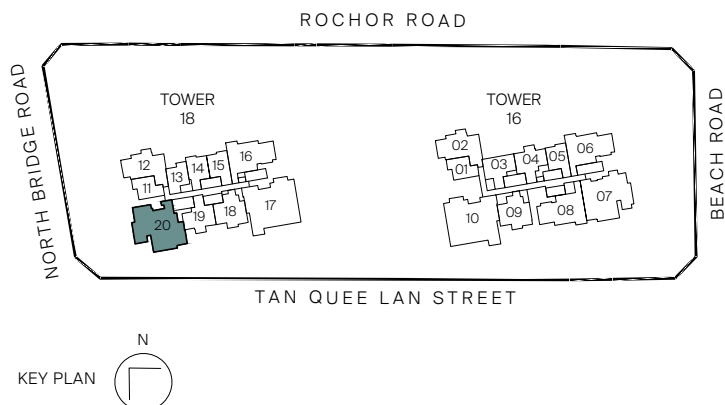
UNIT

#30-20



Legend (where applicable)

- | | |
|-------------------------------|--------------------------------|
| F - Fridge | WCH - Wine Chiller |
| IH - Induction Hob | W - Washer |
| GH - Gas Hob | D - Dryer |
| WM - Washer cum Dryer | DB - Distribution Board |
| SO - Steam Oven | SC - Shoe Cabinet |
| CO - Convectional Oven | |



All plans are subjected to amendments as may be approved by the relevant authorities. Floor areas are approximate measurements and are subjected to final survey.

* Balconies/PES are not to be enclosed except with a balcony screen which has been approved and complies with the Competent Authority's guidelines. For an illustration of the approved balcony screen, please refer to this brochure

4-BEDROOM PREMIUM

Type D3P-G (PL)

161 sq m | 1733 sq ft

INCLUSIVE OF 16 SQM PES & 7 SQM AC LEDGE

Tower 16

UNIT

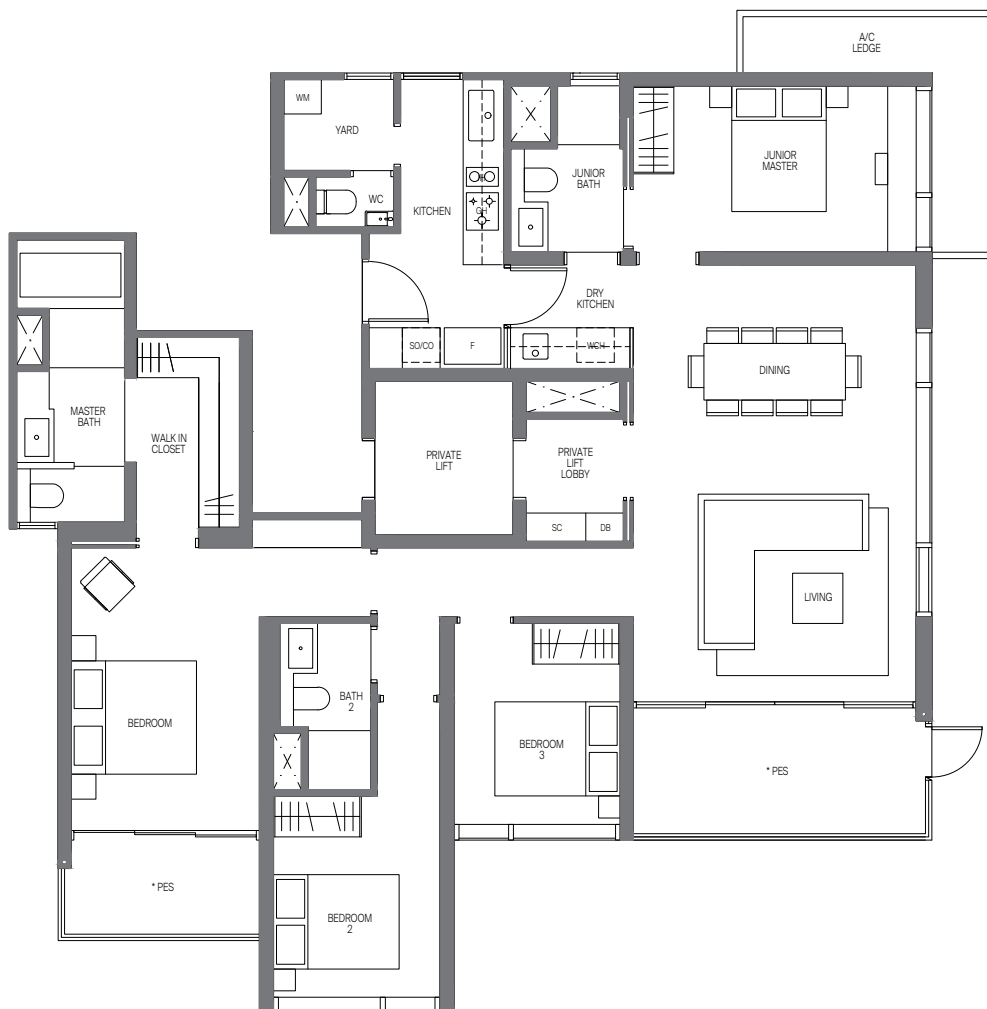
#03-10*

Tower 18

UNIT

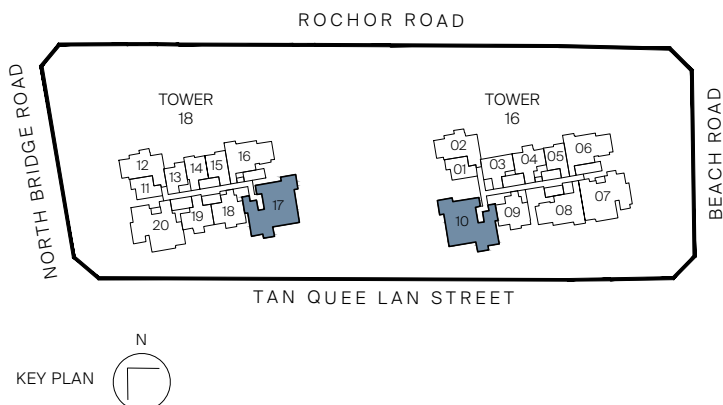
#03-17

* MIRROR IMAGE



Legend (where applicable)

- | | |
|-------------------------------|--------------------------------|
| F - Fridge | WCH - Wine Chiller |
| IH - Induction Hob | W - Washer |
| GH - Gas Hob | D - Dryer |
| WM - Washer cum Dryer | DB - Distribution Board |
| SO - Steam Oven | SC - Shoe Cabinet |
| CO - Convectional Oven | |



All plans are subjected to amendments as may be approved by the relevant authorities. Floor areas are approximate measurements and are subjected to final survey.

* Balconies/PES are not to be enclosed except with a balcony screen which has been approved and complies with the Competent Authority's guidelines.

For an illustration of the approved balcony screen, please refer to this brochure

4-BEDROOM PREMIUM

Type D3P (PL)

168 sq m | 1808 sq ft

INCLUSIVE OF 16 SQM BALCONY & 8 SQM AC LEDGE

Tower 16

UNIT

#04-10* to #29-10*

Tower 18

UNIT

#04-17 to #29-17

Type D3P-R (PL)

168 sq m | 1808 sq ft

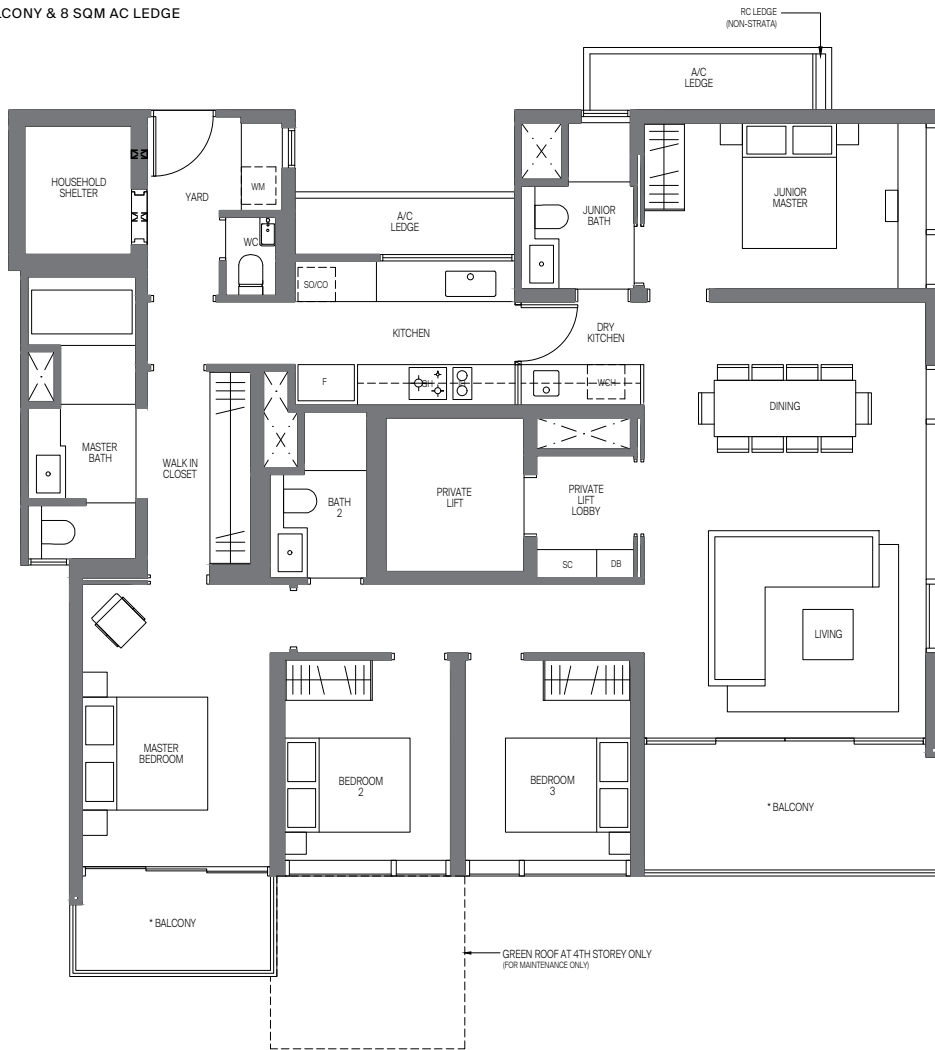
INCLUSIVE OF 16 SQM BALCONY & 8 SQM AC LEDGE

Tower 16

UNIT

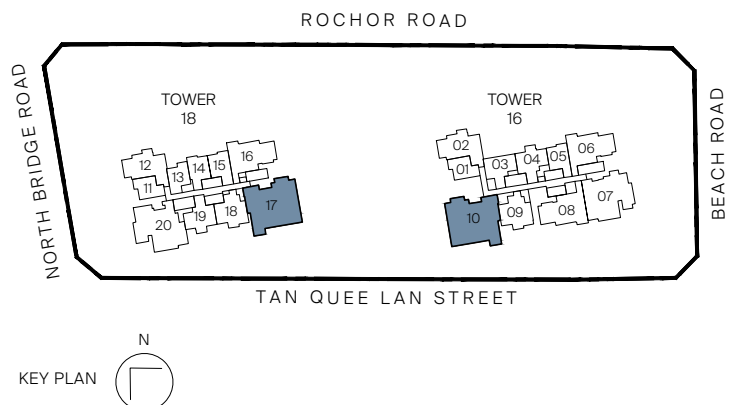
#30-10*

* MIRROR IMAGE



Legend (where applicable)

- | | |
|-------------------------------|--------------------------------|
| F - Fridge | WCH - Wine Chiller |
| IH - Induction Hob | W - Washer |
| GH - Gas Hob | D - Dryer |
| WM - Washer cum Dryer | DB - Distribution Board |
| SO - Steam Oven | SC - Shoe Cabinet |
| CO - Convectional Oven | |



All plans are subjected to amendments as may be approved by the relevant authorities. Floor areas are approximate measurements and are subjected to final survey.

* Balconies/PES are not to be enclosed except with a balcony screen which has been approved and complies with the Competent Authority's guidelines.

For an illustration of the approved balcony screen, please refer to this brochure

4-BEDROOM PENTHOUSE

Type PH 1 (PL)

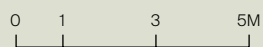
304 sq m | 3272 sq ft

INCLUSIVE OF 28 SQM BALCONY & 8 SQM AC LEDGE

Tower 18

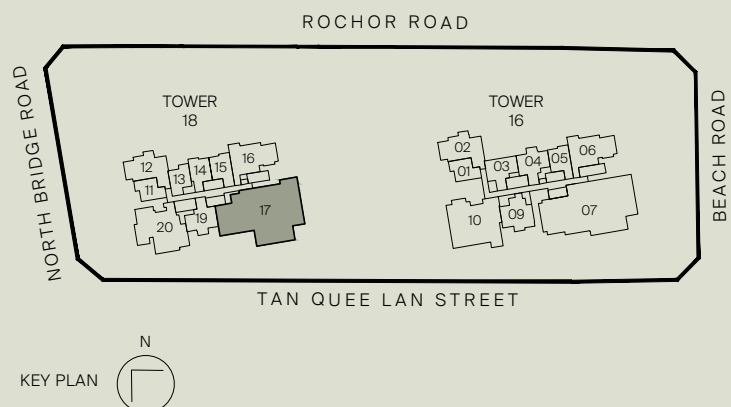
UNIT

#30-17



Legend (where applicable)

- | | |
|-------------------------------|--------------------------------|
| F - Fridge | VD - Vacuum Drawer |
| IH - Induction Hob | WD - Warmer Drawer |
| GH - Gas Hob | DW - Dishwasher |
| SO - Steam Oven | W - Washer |
| CSO - Combi Steam Oven | D - Dryer |
| CO - Convectional Oven | DB - Distribution Board |
| WCH - Wine Chiller | SC - Shoe Cabinet |



All plans are subjected to amendments as may be approved by the relevant authorities. Floor areas are approximate measurements and are subjected to final survey.

* Balconies/PES are not to be enclosed except with a balcony screen which has been approved and complies with the Competent Authority's guidelines.

For an illustration of the approved balcony screen, please refer to this brochure

5-BEDROOM PENTHOUSE

Type PH 2 (PL)

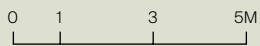
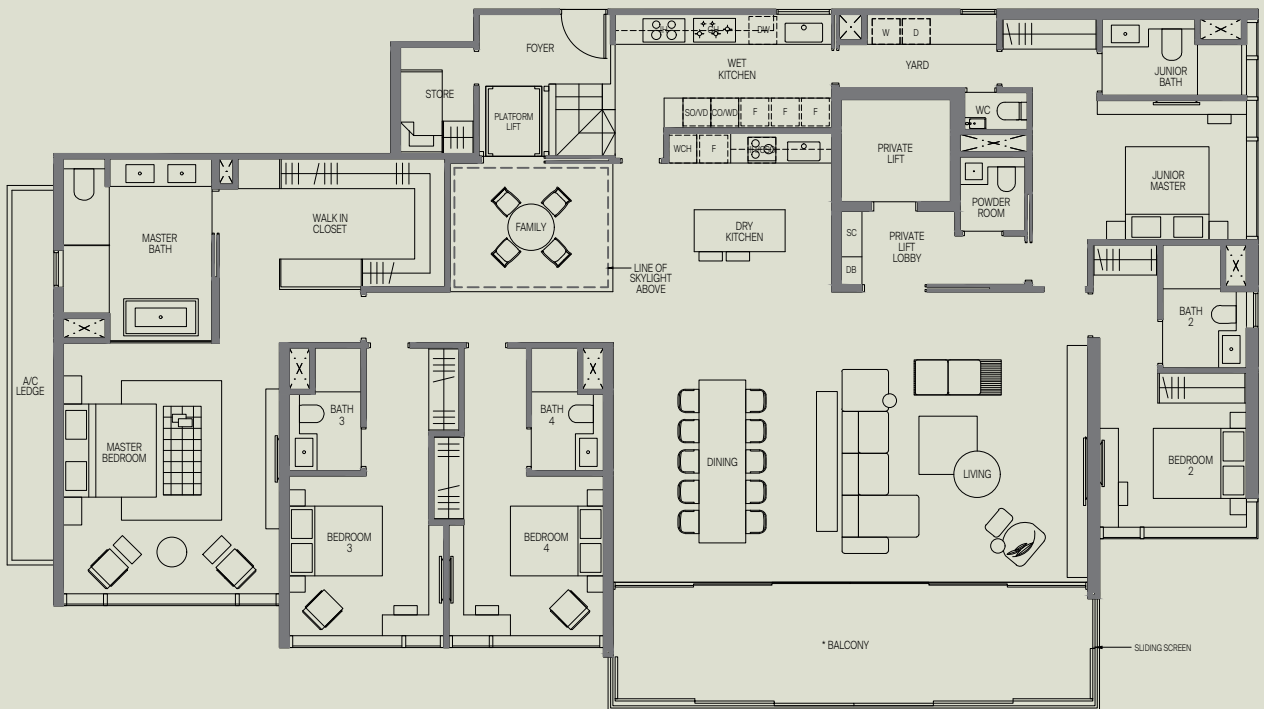
327 sq m | 3520 sq ft

INCLUSIVE OF 28 SQM BALCONY & 9 SQM AC LEDGE

Tower 16

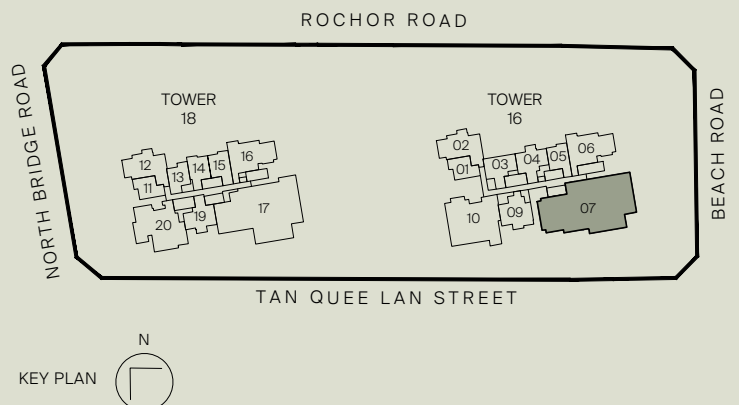
UNIT

#30-07



Legend (where applicable)

- | | |
|-------------------------------|--------------------------------|
| F - Fridge | VD - Vacuum Drawer |
| IH - Induction Hob | WD - Warmer Drawer |
| GH - Gas Hob | DW - Dishwasher |
| SO - Steam Oven | W - Washer |
| CSO - Combi Steam Oven | D - Dryer |
| CO - Convectional Oven | DB - Distribution Board |
| WCH - Wine Chiller | SC - Shoe Cabinet |

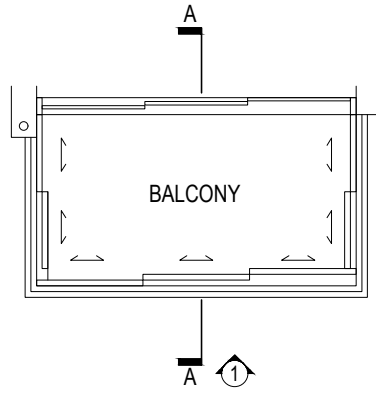


All plans are subjected to amendments as may be approved by the relevant authorities. Floor areas are approximate measurements and are subjected to final survey.

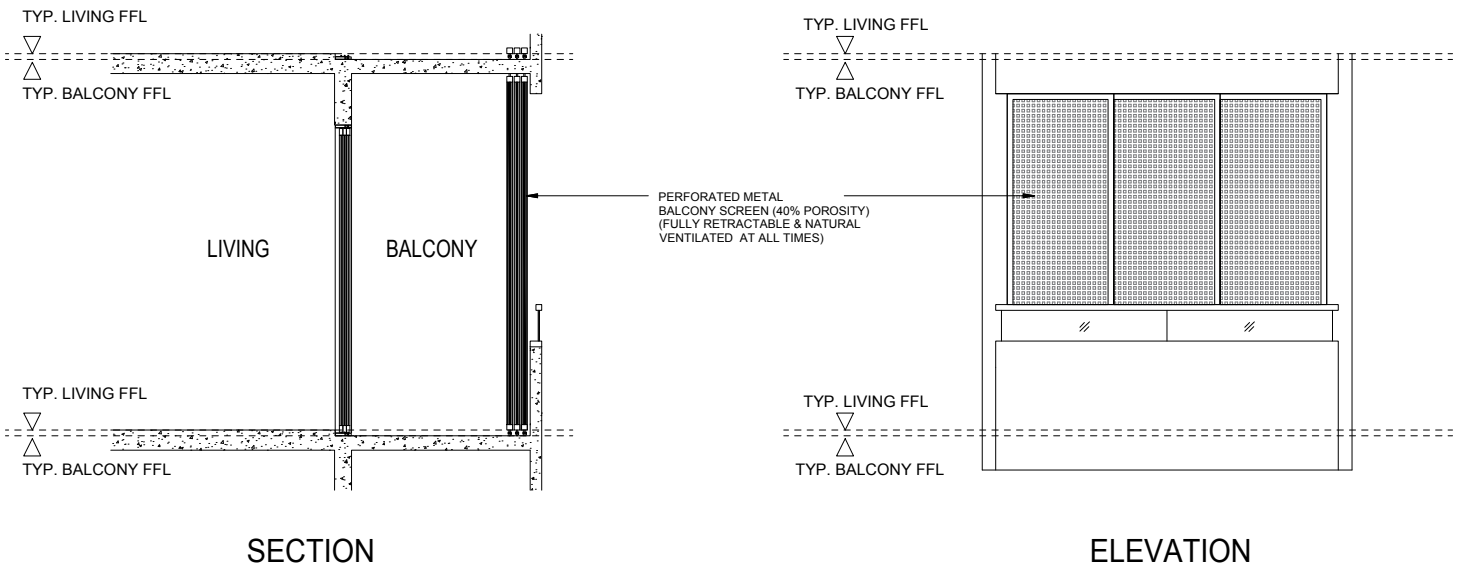
* Balconies/PES are not to be enclosed except with a balcony screen which has been approved and complies with the Competent Authority's guidelines.

For an illustration of the approved balcony screen, please refer to this brochure

APPROVED BALCONY SCREEN DESIGN



TYPICAL RETRACTABLE BALCONY SCREEN - PLAN

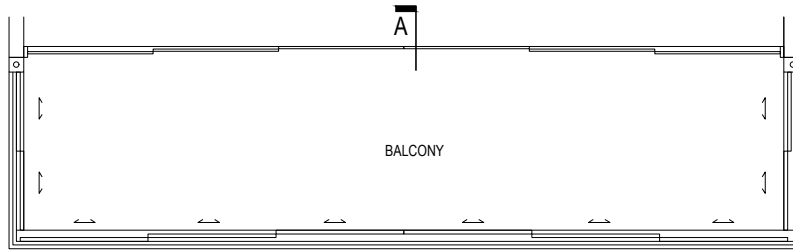


SECTION

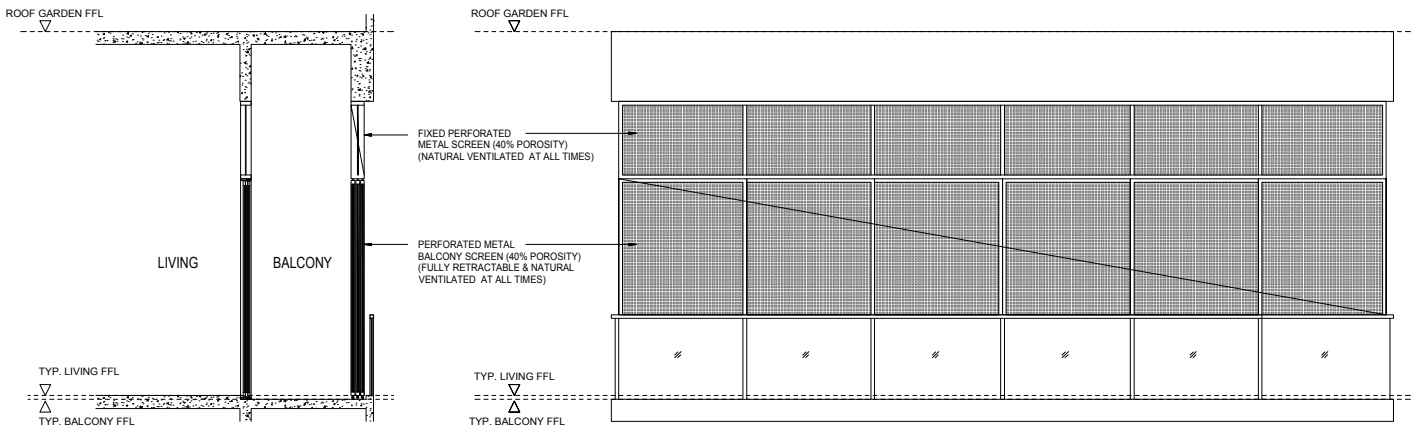
ELEVATION

NOTE: The Balcony Screen drawn above may be installed by purchasers at the their option.
For avoidance of doubt, The Balcony Screen will not be provided by developer.

APPROVED BALCONY SCREEN DESIGN (FOR PH1 (PL) & PH2 (PL) ONLY)




 PENTHOUSE RETRACTABLE BALCONY
 SCREEN - PLAN



SECTION

ELEVATION

NOTE: Balcony Screen to be provided by developer (only for (PH1 (PL) & PH2 (PL) units).